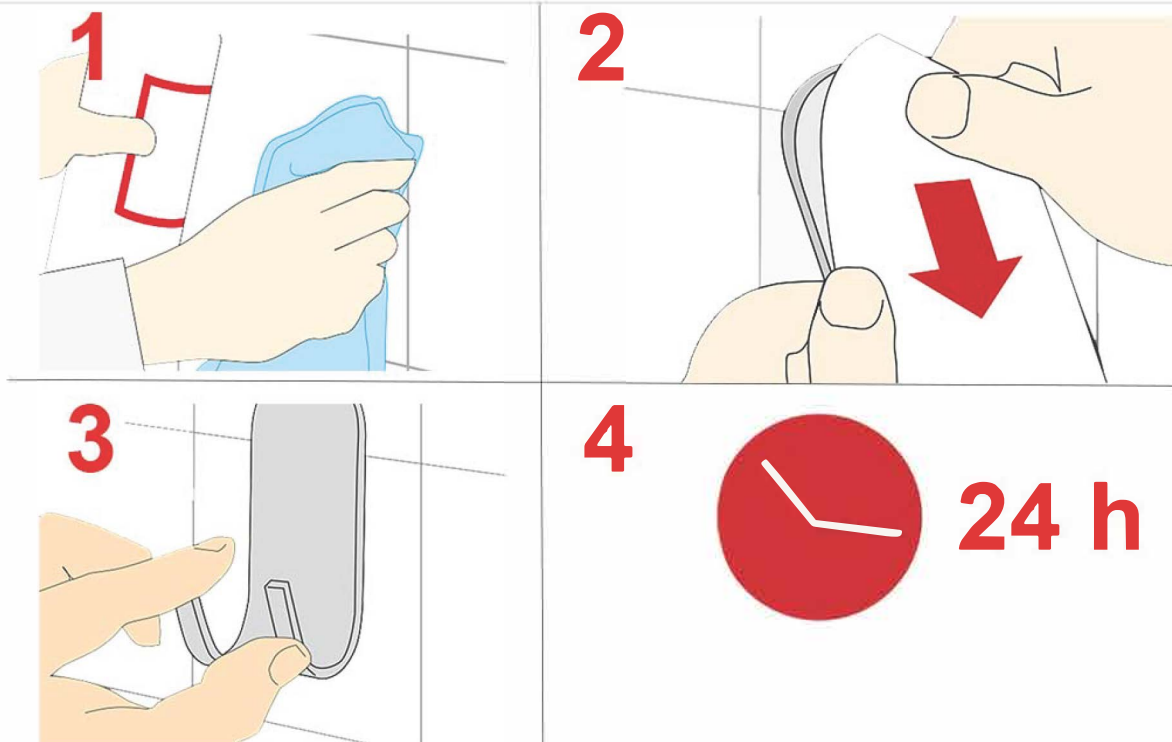


ASSEMBLE SELF ADHESIVE PRODUCTS



How to assemble a self adhesive product

In order for the self-adhesive product to sit firmly and do the job, it is important that it is mounted correctly. Follow these 4 steps!

1. Clean the surface thoroughly and let it dry for 10 minutes. The cleaning agent must not contain oil
2. Remove the protective film
3. Apply the product to the desired location

Let the glue cure for 24 hours before loading the product

Self-adhesive products are NOT recommended to be mounted on the wet room wallpaper as plasticizers in the wet room wallpaper have a negative effect on the adhesive and the product can come loose from the wall.